



CHASSIS COMPONENTS

BY DTPRODUCTS, INC.

484 EZ STREET PRESCOTT, AZ 86301

PHONE: 928.776.4129 FAX: 928.776.2405

www.tabzone.com email: info@tabzone.com

SPRING 2004 CATALOG

03/01/04

PRICE SHEET

FOR MILD STEEL

FLAT & RADIUS TABS ON PAGES

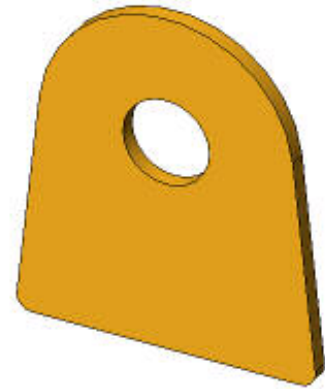
2/12/04

CODE#	DESCRIPTION	1-19	20-49	50-99
02-101	16 GA CRS 2.00" STANDOFF FLAT OR RADIUS TAB	1.80	1.35	1.05
02-102	14 GA HRPO 2.00" STANDOFF FLAT OR RADIUS TAB	1.80	1.35	1.05
02-103	13 GA HRPO 2.00" STANDOFF FLAT OR RADIUS TAB	1.80	1.35	1.05
02-104	12 GA HRPO 2.00" STANDOFF FLAT OR RADIUS TAB	1.80	1.40	1.20
02-105	11 GA HRPO 2.00" STANDOFF FLAT OR RADIUS TAB	2.00	1.60	1.30
02-106	10 GA HRPO 2.00" STANDOFF FLAT OR RADIUS TAB	2.20	1.65	1.30
02-107	10 GA HRPO 2.00" TO 2.625" STANDOFF FLAT OR RADIUS TAB	2.25	1.65	1.35
02-108	3/16" HRPO TABS UP TO 1.500" STANDOFF	2.25	1.80	1.35
02-109	3/16" HRPO TABS 1.625" TO 2.00" STANDOFF	2.25	1.80	1.35
02-110	3/16" HRPO TABS 2.10" TO 2.625 STANDOFF	2.40	2.00	1.50
02-113	1/4" HRPO TABS UP TO 1.500" STANDOFF	3.00	2.50	1.90
02-114	1/4" HRPO TABS 1.625" TO 2.00" STANDOFF	3.25	2.65	2.00
02-115	1/4" HRPO TABS 2.10" TO 2.625" STANDOFF	3.50	2.85	2.50

WHEN ORDERING TABS ON THE FOLLOWING PAGES YOU WILL ORDER BY TAB PART NUMBER & BILLED BY CODE NUMBER.

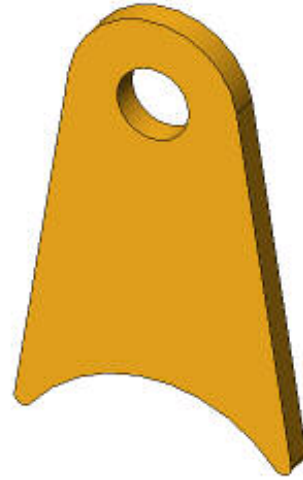
COMBINE AN ORDER OF 4 OR MORE PART NUMBERS (MINIMUM OF 20 PIECES EACH) IN A SINGLE CODE NUMBER LINE FOR QUANTITY BREAKS.

FLAT TABS



STANDOFF DIMENSION	1/4" BOLTS	5/16" BOLTS	3/8" BOLTS	7/16" BOLTS	1/2" BOLTS	5/8" BOLTS	3/4" BOLTS
	PART #	PART #	PART #	PART #	PART #	PART #	PART #
1/2	2550	3150	3850	438650			
5/8	2551	3151	3851	438651			
3/4	2552	3152	3852	438652			
7/8	2553	3153	3853	438653			
1	2554	3154	3854	438654	5550	6250	
1 1/8	2555	3155	3855	438655	5551	6251	
1 1/4	2556	3156	3856	438656	5552	6252	
1 3/8	2557	3157	3857	438657	5553	6253	
1 1/2	2558	3158	3858	438658	5554	6254	
1 5/8	2559	3159	3859	438659		6255	
1 3/4	2560	3160	3860	438660	5555	6256	
1 7/8	2561	3161	3861	438661			
2	2562	3162	3862	438662	5556	6257	
2 1/4			3863		5557	6258	
2 1/2			3864		5558	6259	
2 3/4							
3							

RADIUS TABS




3/4" TUBE DIAMETER	STANDOFF DIMENSION	1/4"	5/16"	3/8"
		BOLTS	BOLTS	BOLTS
		PART #	PART #	PART #
	1/2	2501	3101	3801
	5/8	2502	3102	
	3/4	2503	3103	3802
	7/8	2504	3104	
	1	2505	3105	3803
	1 1/8	2506	3106	
	1 1/4	2507	3107	3804
	1 3/8	2508	3108	
	1 1/2	2509	3109	3805

1" TUBE DIAMETER	STANDOFF DIMENSION	1/4"	5/16"	3/8"
		BOLTS	BOLTS	BOLTS
		PART #	PART #	PART #
	1/2	2510	3110	3806
	5/8	2511	3111	
	3/4	2512	3112	3807
	7/8	2513	3113	
	1	2514	3114	3808
	1 1/8	2515	3115	
	1 1/4	2516	3116	3809
	1 3/8	2517	3117	
	1 1/2	2518	3118	3810
	1 3/4			3811
	2			3812
	2 1/4			3813
	2 1/2			3814


1 1/4" TUBE DIAMETER	STANDOFF DIMENSION	1/4"	5/16"	3/8"	1/2"
		BOLTS	BOLTS	BOLTS	BOLTS
		PART #	PART #	PART #	PART #
	1/2	2520	3119	3815	
	5/8	2521	3120		
	3/4	2522	3121	3816	5001
	7/8	2523	3122		
	1	2524	3123	3817	5002
	1 1/8	2525	3124		
	1 1/4	2526	3125	3818	5003
	1 3/8	2527	3126		
	1 1/2	2528	3127	3819	5004
	1 3/4			3820	5005
	2			3821	5006
	2 1/4			3822	5007
	2 1/2				5008


1 1/2" TUBE DIAMETER	STANDOFF DIMENSION	1/4"	5/16"	3/8"	1/2"	5/8"
		BOLTS	BOLTS	BOLTS	BOLTS	BOLTS
		PART #	PART #	PART #	PART #	PART #
	1/2	2530	3128	3824		
	5/8	2531	3129			
	3/4	2532	3130	3825	5009	
	7/8	2533	3131			
	1	2534	3132	3826	5010	
	1 1/8	2535	3133			
	1 1/4	2536	3134	3827	5011	6201
	1 3/8	2537	3135			6202
	1 1/2	2538	3136	3828	5012	6203
	1 3/4			3829	5013	6204
	2			3830	5014	6205
	2 1/4			3831	5015	6206
	2 1/2			3832	5016	


RADIUS TABS

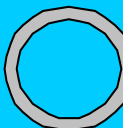
1 3/4" TUBE DIAMETER	STANDOFF DIMENSION	1/2"	5/8"
		BOLTS	BOLTS
		PART #	PART #
	3/4	5017	
	1	5018	
	1 1/4	5019	6207
	1 3/8		6208
	1 1/2	5020	6209
	1 3/4	5021	6210
	2	5022	6211
	2 1/4	5023	6212
	2 1/2	5024	



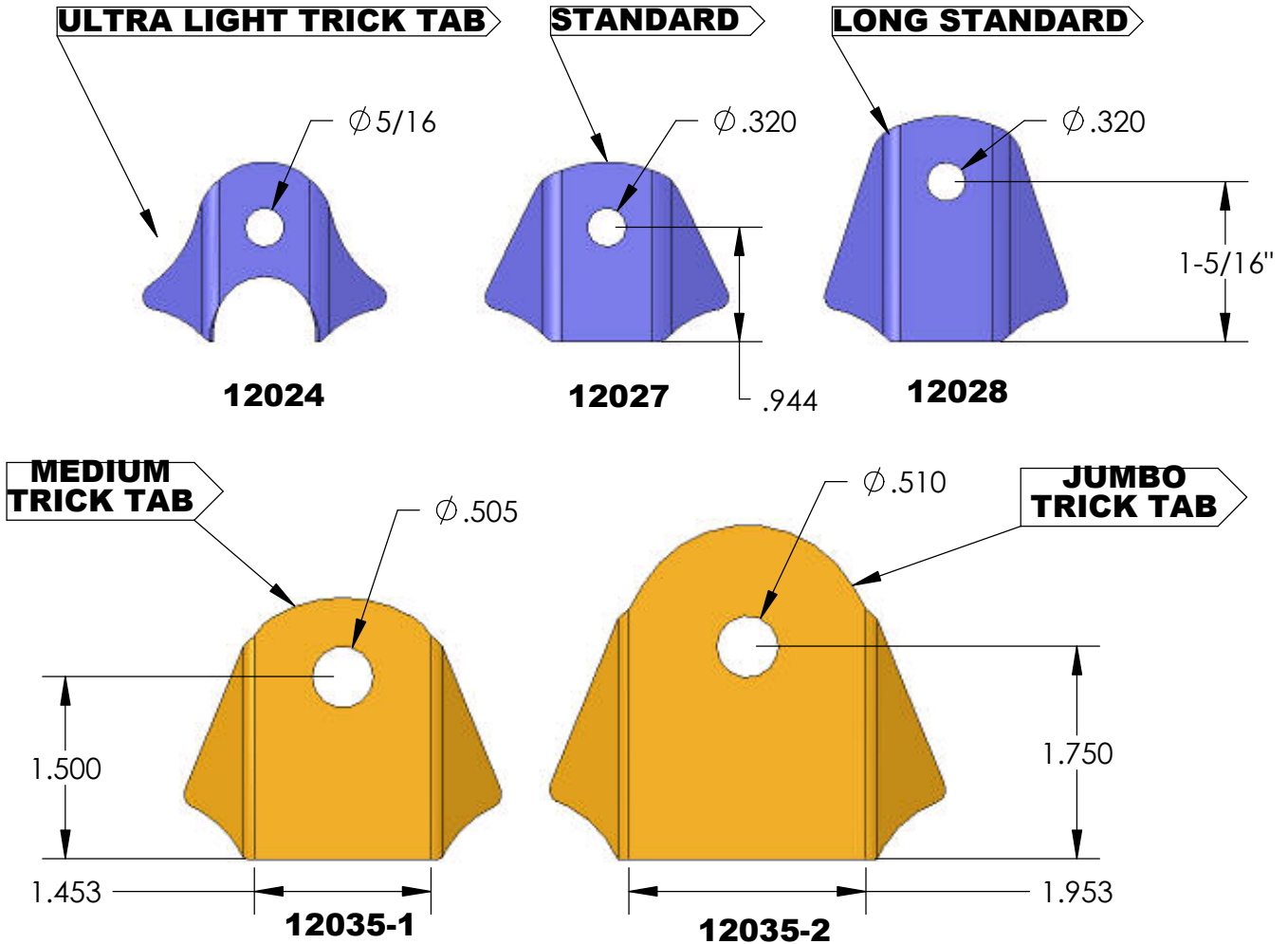
2" TUBE DIAMETER	STANDOFF DIMENSION	1/2"	5/8"
		BOLTS	BOLTS
		PART #	PART #
	1 1/4		6213
	1 3/8		6214
	1 1/2	5025	6215
	1 3/4	5026	6216
	2	5027	6217
	2 1/4	5028	6218
	2 1/2	5029	
	2 3/4		
	3		

2 1/2" TUBE DIAMETER	STANDOFF DIMENSION	1/2"	5/8"
		BOLTS	BOLTS
		PART #	PART #
	1 1/4		6219
	1 1/2		6220
	1 3/4		6221
	2		6222
	2 1/4		6223
	2 1/2		6224
	2 3/4		
	3		

2 3/4" TUBE DIAMETER	STANDOFF DIMENSION	1/2"	5/8"	3/4"
		BOLTS	BOLTS	BOLTS
		PART #	PART #	PART #
	1 1/4		6225	
	1 1/2		6226	
	1 3/4		6227	
	2		6228	7520
	2 1/4		6229	7521
	2 3/8			7522
	2 1/2		6230	7523
	3 1/2			7524

3" TUBE DIAMETER	STANDOFF DIMENSION	1/2"	5/8"	3/4"
		BOLTS	BOLTS	BOLTS
		PART #	PART #	PART #
	1 1/2		6231	
	1 3/4		6232	
	2	5031	6233	7525
	2 1/4	5032	6234	7526
	2 3/8			7527
	2 1/2	5033	6235	7528
	2 5/8			7529

TRICK TABS



STANDARD TRICK TABS

PART #	BOLT DIA
12024	ULTRA LIGHT
12025	1/4" HOLE
12027	5/16" HOLE
12029	3/8" HOLE
12031	7/16" HOLE
12033	1/2" HOLE

LONG STANDARD TRICK TABS

PART #	BOLT DIA
12026	1/4" HOLE
12028	5/16" HOLE
12030	3/8" HOLE
12032	7/16" HOLE
12034	1/2" HOLE

PRICING FOR STANDARD AND LONG STANDARD

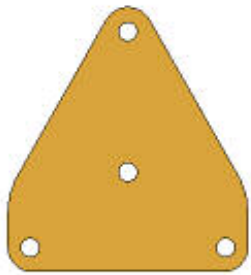
1-49 PCS	\$0.75 EA
50-99 PCS	\$0.65 EA
100-299 PCS	\$0.45 EA

MEDIUM AND JUMBO TRICK TABS

12035-1
12035-2

1-9 PCS	\$3.25 EA
10-49 PCS	\$2.65EA

QUANTITY DISCOUNTS AVAILABLE



12036-1



12036-2



12037

BUS MOUNT - 3/16" MILD STEEL



12038

MENDEOLA REAR MOUNT - 1/4" MILD STEEL

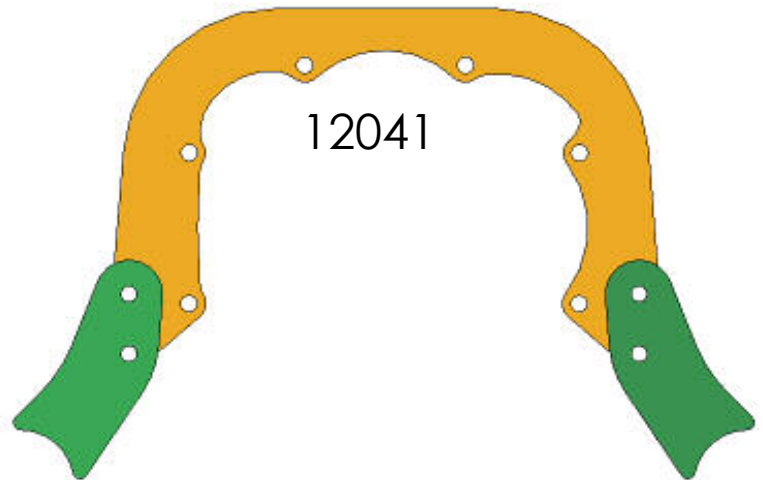


12039

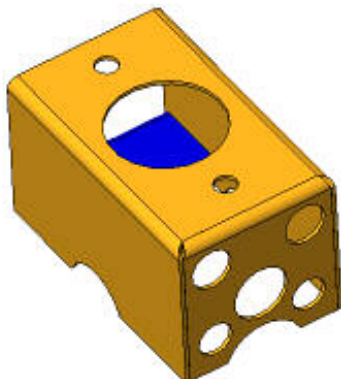
MENDEOLA FRONT MOUNT - 1/4" MILD STEEL



12040



12041



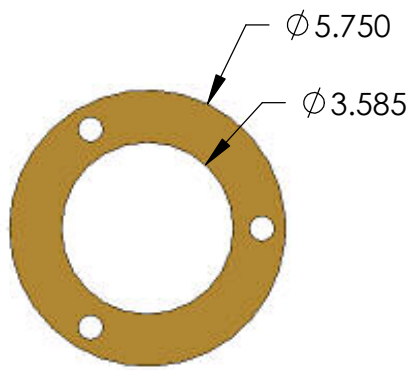
12050



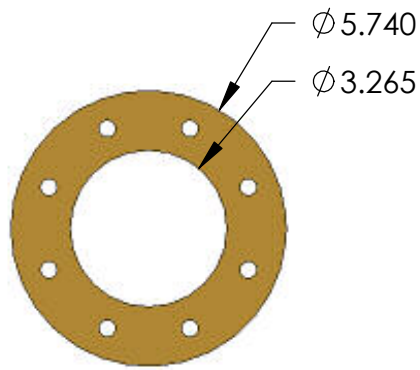
12053
MIRROR MOUNT



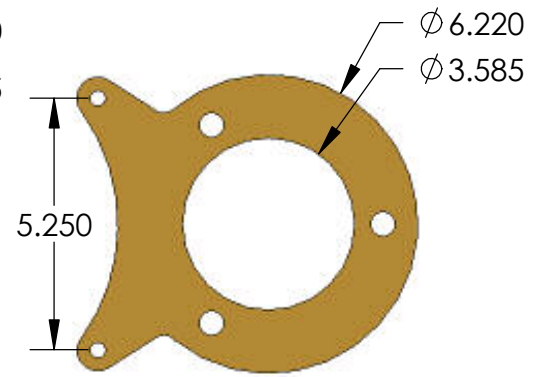
12054 COIL MOUNT



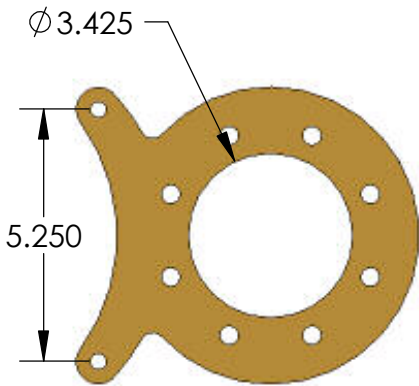
12051-1



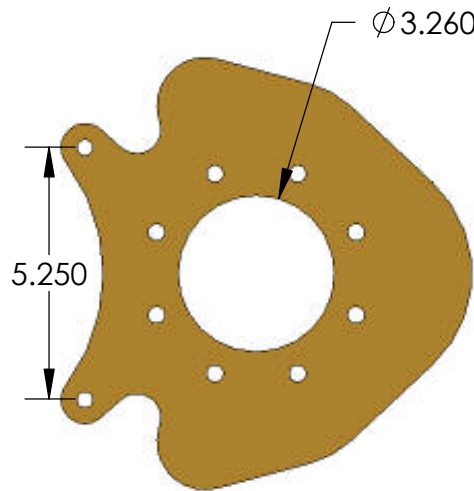
12051-2



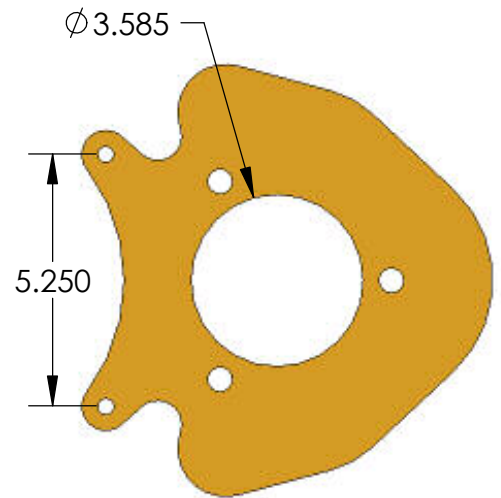
12051-3



12051-4



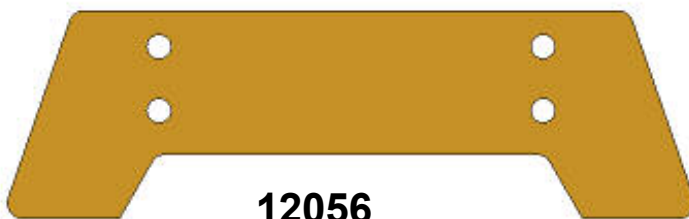
12051-5



12051-6



12055



12056



12057



12058



12059

STOCK STYLE
TORSION HOUSING END PLATES



TUBE CONNECTOR
 FLANGES 3/16" THICK
 12063 1 1/4" DIA
 12064 1 1/2" DIA
 12065 1 3/4" DIA



12071 12072
 CNC PEDAL MOUNTS



12069 3/8" HOLE
 12290 5/16" HOLE
 12291 3/8" X 1" SLOT



12073
 STEER SHAFT
 SUPPORT



12074
 DZUS SPRING
 TAB-LONG



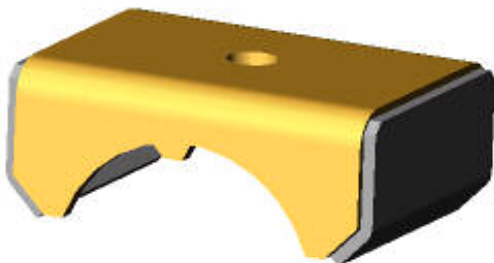
12075
 DZUS SPRING
 TAB-SHORT



12076

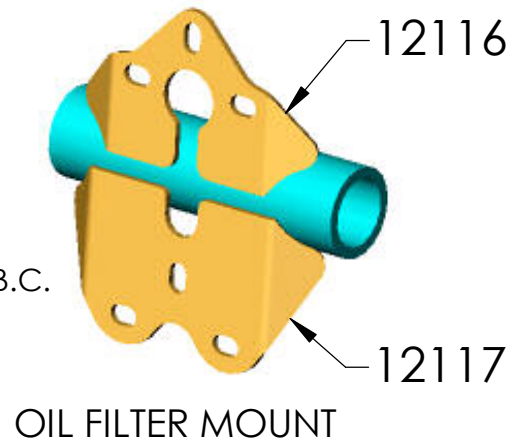
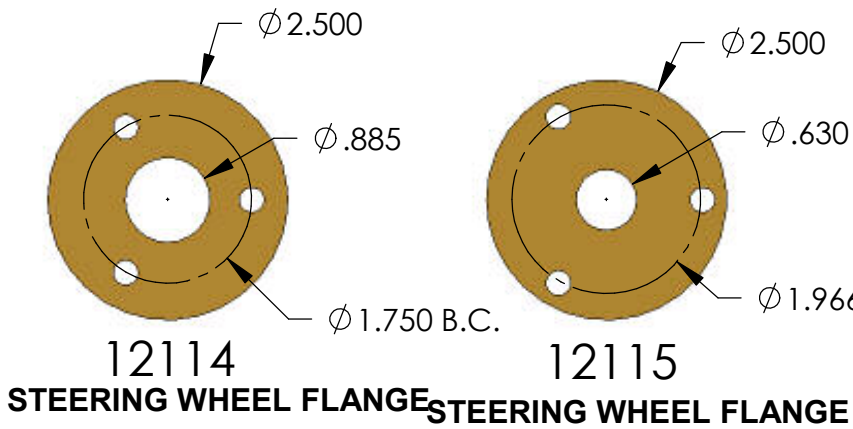
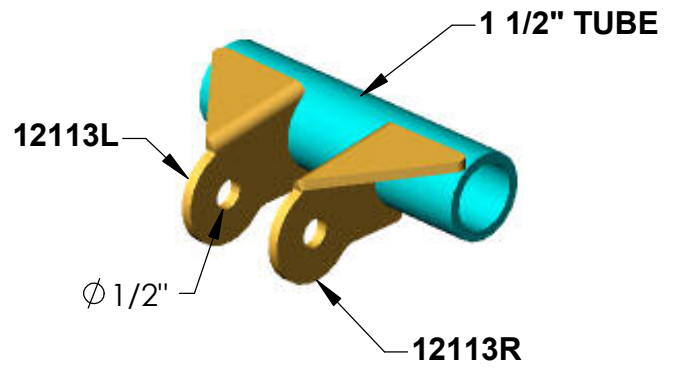
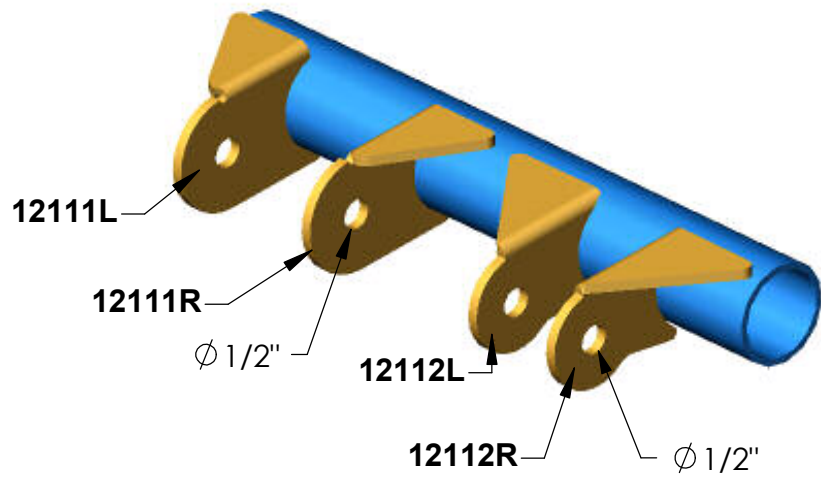
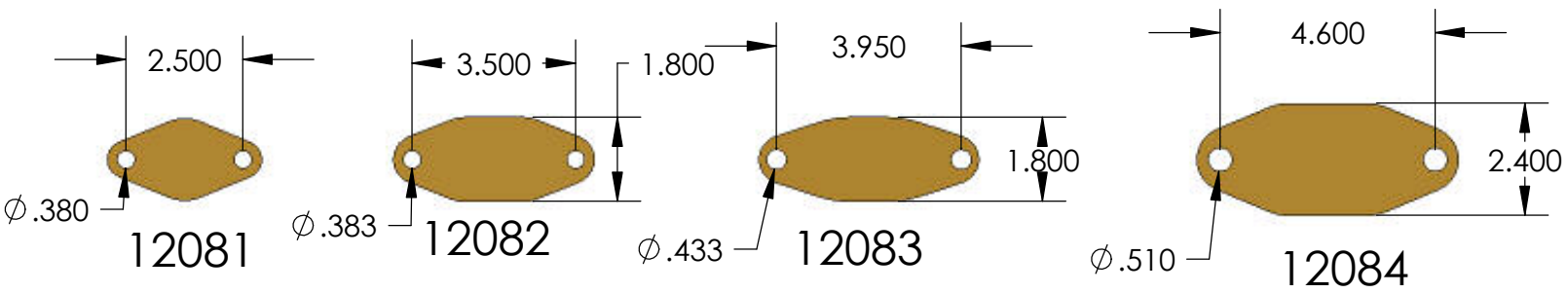


12077

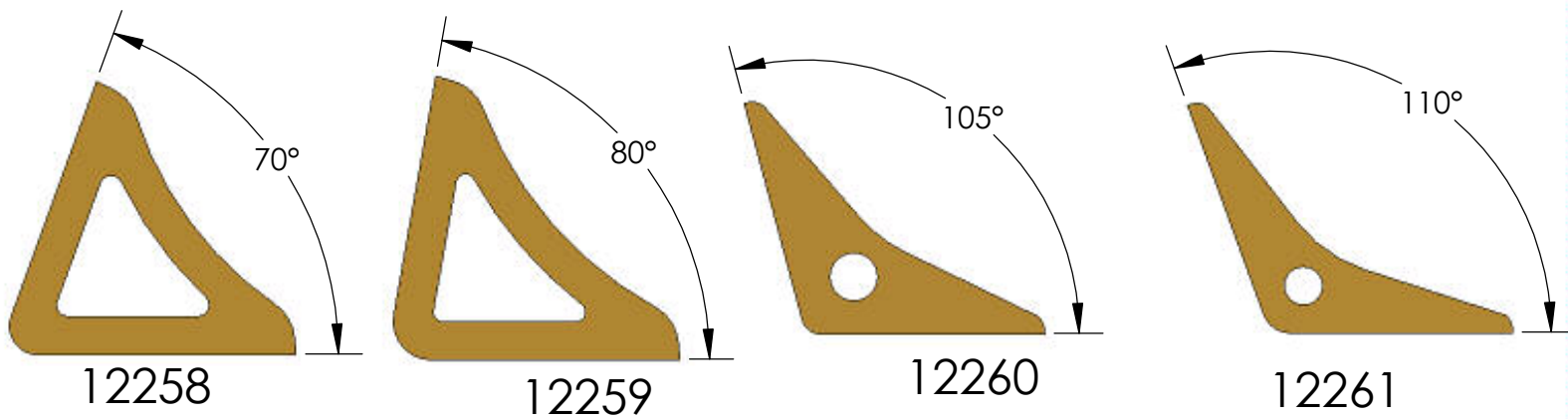
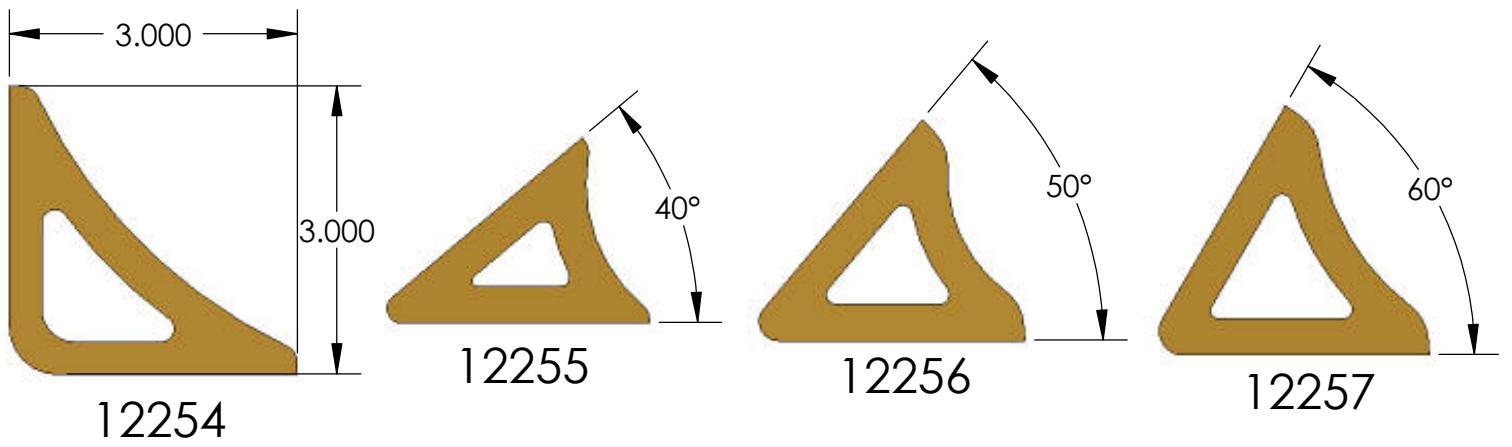
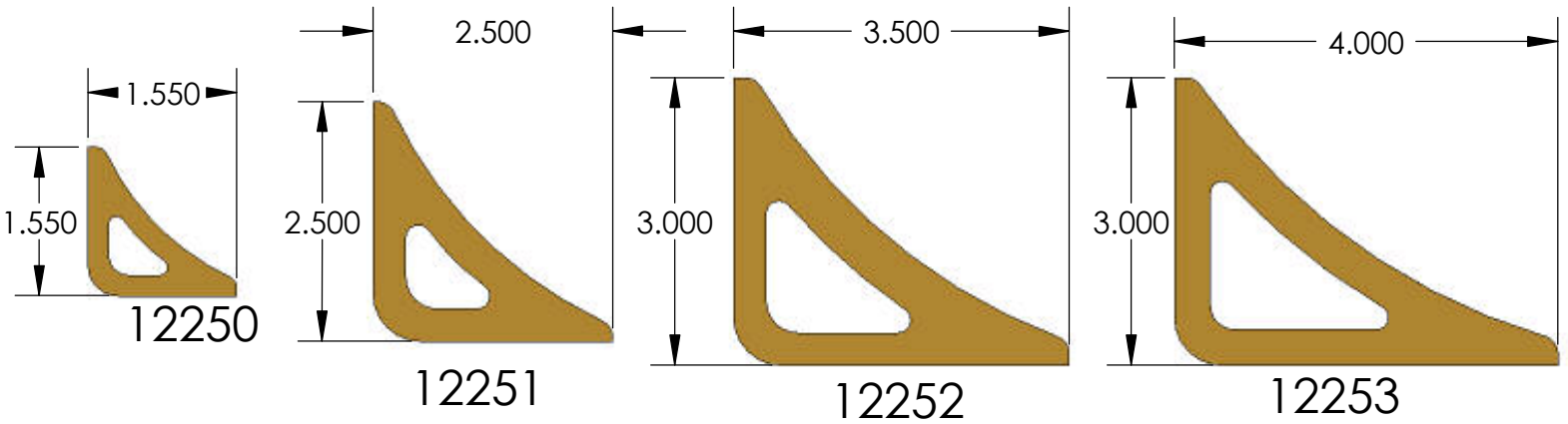


SPRING PERCH

12080-1 \varnothing 2.25" x 1.75" WIDE
 12080-2 \varnothing 2.25" x 2.00" WIDE
 12080-3 \varnothing 3.00" x 2.50" WIDE
 12080-4 \varnothing 3.00" x 3.00" WIDE



GUSSETS



EXHAUST HEADER FLANGES



12120 440 MOPAR



12127-1 GM 4.3 V6



**VIPER: 12122-1 UP TO '02
12122-2 '03 - UP**



12128-1 SCAT V-4



**502 CHEVY:
12123-1 2.00" SQUARED PORT
12123-2 RECTANGLE PORT**



**NORTHSTAR V-8
12129-1 PRE 2001
12129-2 2001**



**SB CHEVY
12124-1 1.625"
12124-2 1.750"**



12130-1 GM 3.8L V6 SUPERCHARGED



**454 CHEVY BIG BLOCK
12125-1 2.00"
12125-2 2.25"**



12133-1 SMALL BLOCK FORD



**CHEVY LS1 CORVETTE
12126-1 1.625"
12126-2 1.750"**



12134-1 460 FORD

EXHAUST HEADER FLANGES



12136-1 V6 ACURA



12136-2 HONDA



12136-3
MID-LATE 80'S
HONDA V6



12137-1
'97 - UP 3.0L
V6 NISSAN



12137-2
V6 NISSAN



12137-3
NISSAN V-6 300Z



12139-1 6 CLY TOYOTA CELICA SUPRA



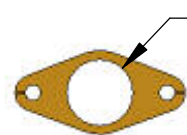
12140-1 V8 PORSCHE
12140-2 V8 UNI PORSCHE



12142 401 AMC



12143
SUBARU EXHAUST



Ø 1.383

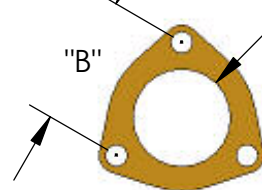
12150

WASTEGATE FLANGE



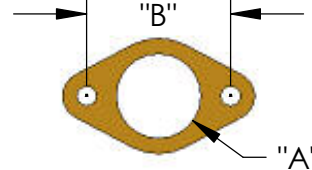
VW FLANGE

12151- 1 1/2"
12152- 1 5/8"
12153- 1 3/4"



COLLECTOR
FLANGE

	"A"	"B"
12154-1	2.00"	2 3/4"
12154-2	2 1/4"	2 3/4"
12154-3	2 1/2"	3"
12154-4	3.00"	3 7/16"
12154-5	3 1/2"	3 13/16"



	"A"	"B"
12155-1	1 3/4"	3"
12155-2	2"	3"
12155-3	2 1/4"	3 1/2"



12149-A



12149-B

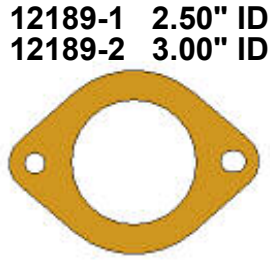
HEADER A AND B TABS
ALSO AVAILABLE IN STAINLESS STEEL

EXHAUST-TURBO FLANGES



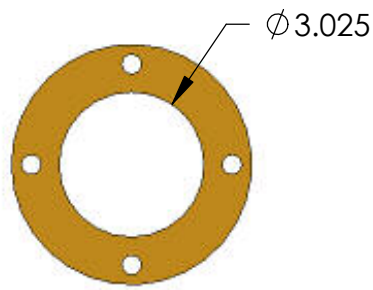
12188

MAZDA SPEED PROTOGE
UPPER DOWN PIPE



12189-1 2.50" ID
12189-2 3.00" ID

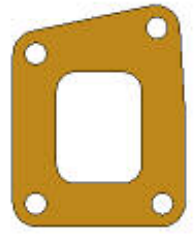
95-98 NISSAN SENTRA
TURBO DOWN PIPE



ϕ 3.025

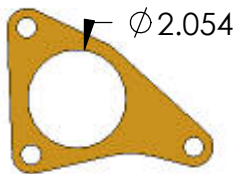
12190

DISCHARGE FLANGE



12191

CHRYSLER TURBO
HOUSING INTAKE
FLANGE



ϕ 2.054

12192

TURBO FLANGE



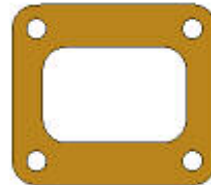
12193

TURBO T-2



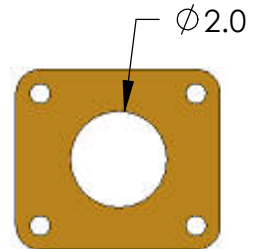
12194

TURBO T-3



12195

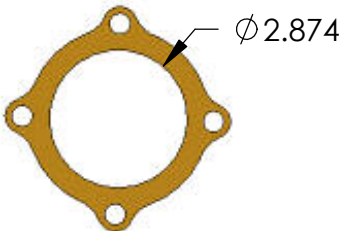
TURBO T-4



ϕ 2.0

12196

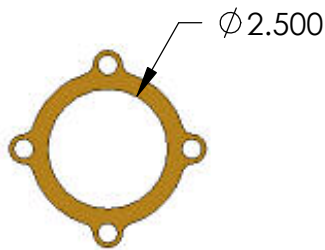
TURBO T-4 FLANGE
w/2.00" ROUND HOLE



ϕ 2.874

12197

SWITZER TURBO FLANGE



ϕ 2.500

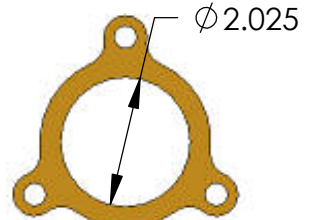
12198

TURBO FLANGE



12199

T3 DISCHARGE FLANGE



ϕ 2.025

12200

T3 DISCHARGE FLANGE
2.00" ROUND 3 BOLT



12201



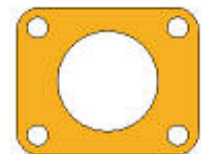
12202

SUBARU DISCHARGE



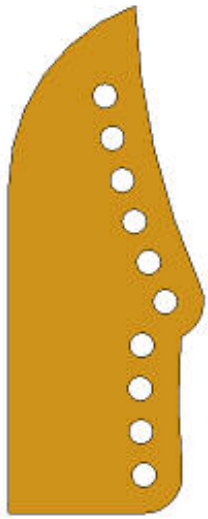
12203

NISSAN
VG - 30



12204

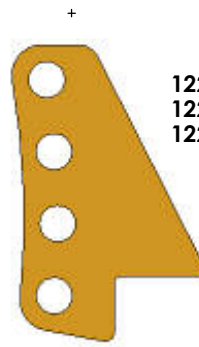
MITSUBISHI TDO4
WITH 2" HOLE



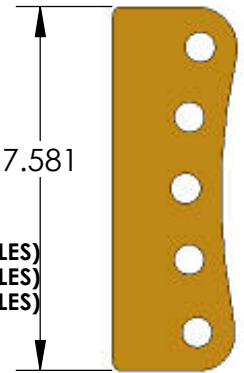
12263-1 (1/2" HOLES)
12263-2 (5/8" HOLES)
12263-3 (3/4" HOLES)



12264-1 (1/2" HOLES)
12264-2 (5/8" HOLES)
12264-3 (3/4" HOLES)



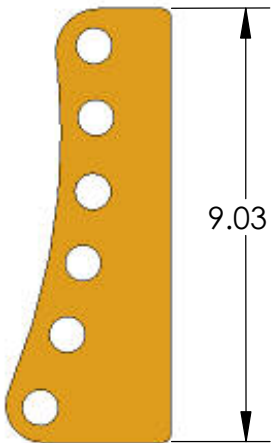
12265-1 (1/2" HOLES)
12265-2 (5/8" HOLES)
12265-3 (3/4" HOLES)



12266-1 (1/2" HOLES)
12266-2 (5/8" HOLES)
12266-3 (3/4" HOLES)

7.581

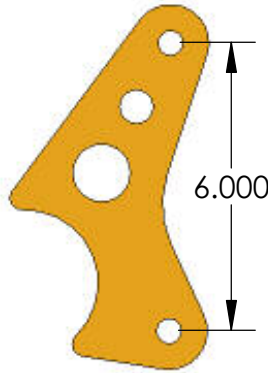
TRAILING ARM BRACKET-5 HOLE



9.031

TRAILING ARM BRACKET-6 HOLE

12267-1 (1/2" HOLES)
12267-2 (5/8" HOLES)
12267-3 (3/4" HOLES)



6.000

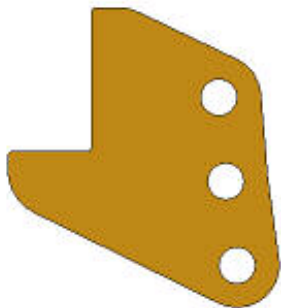
12268-1 (1/2" HOLES)
12268-2 (5/8" HOLES)
12268-3 (3/4" HOLES)



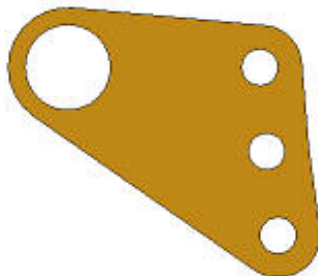
12269-1 (1/2" HOLES)
12269-2 (5/8" HOLES)
12269-3 (3/4" HOLES)



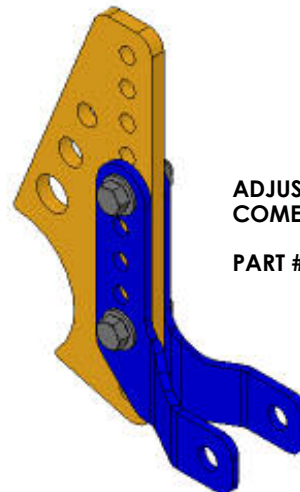
12270-1 (1/2" HOLES)
12270-2 (5/8" HOLES)
12270-3 (3/4" HOLES)



12271-1 (1/2" HOLES)
12271-2 (5/8" HOLES)
12271-3 (3/4" HOLES)

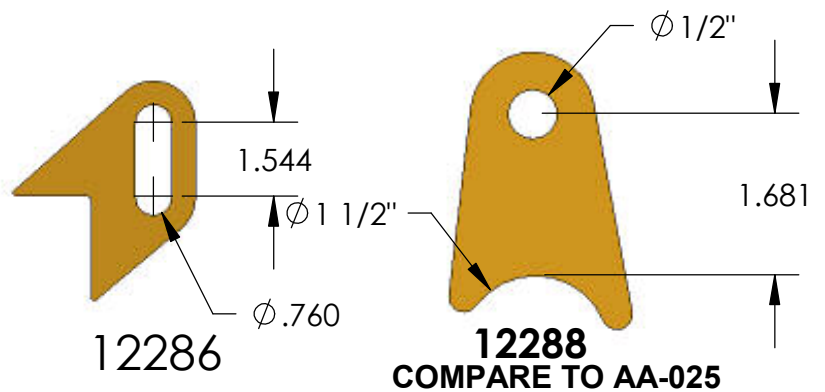
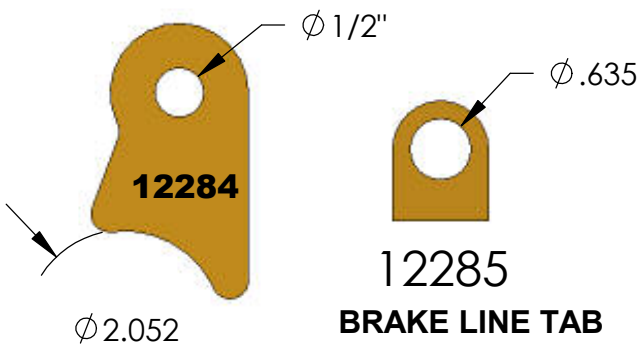
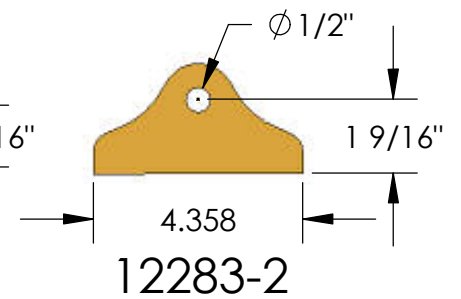
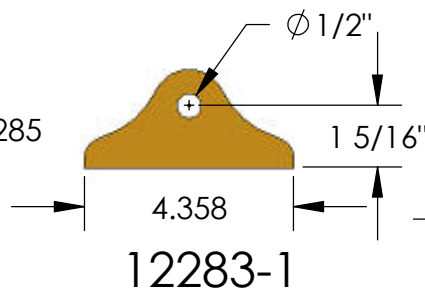
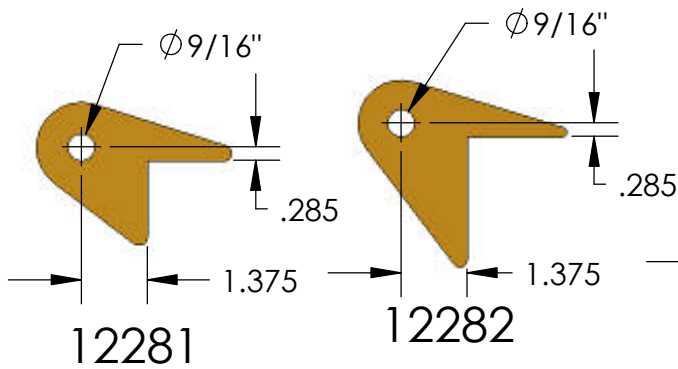
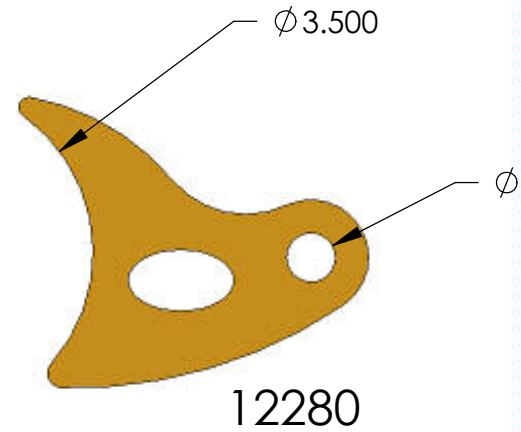
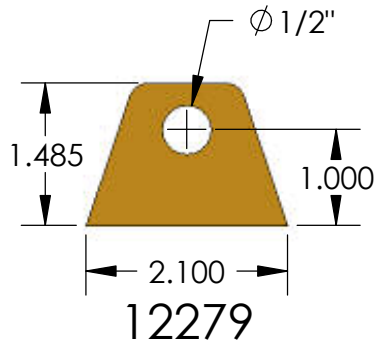
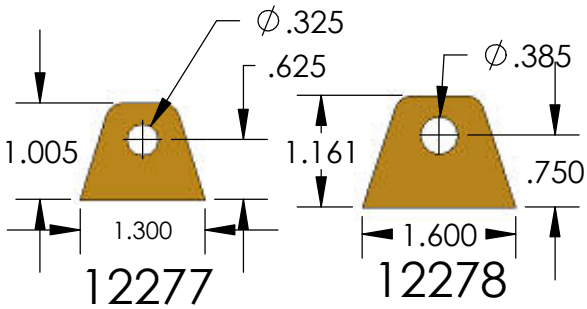
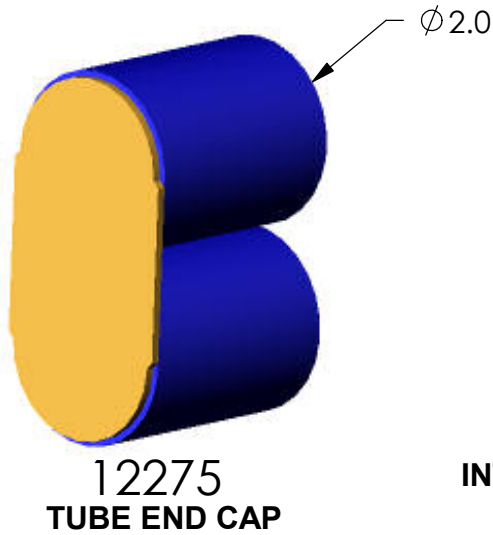
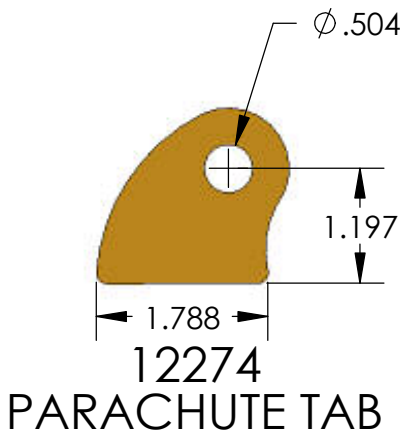


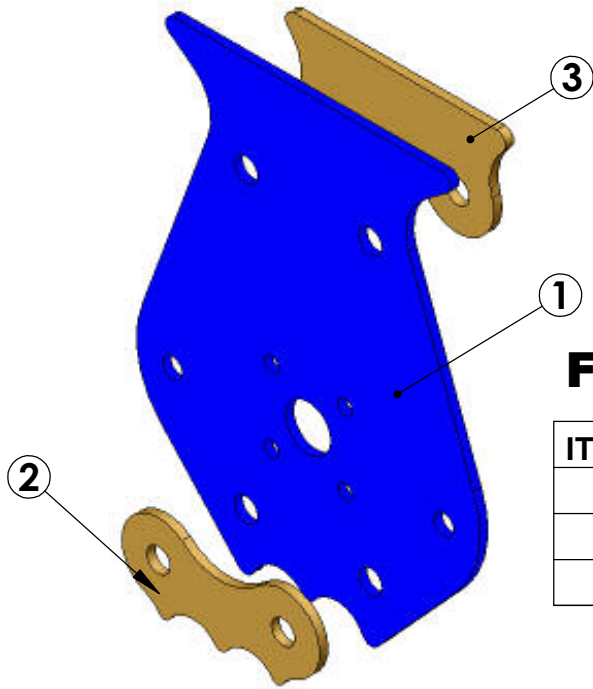
12272-1 (1/2" HOLES)
12272-2 (5/8" HOLES)
12272-3 (3/4" HOLES)



**ADJUSTABLE SHOCK MOUNT
COMES IN PAIRS FOR ONE AXLE**

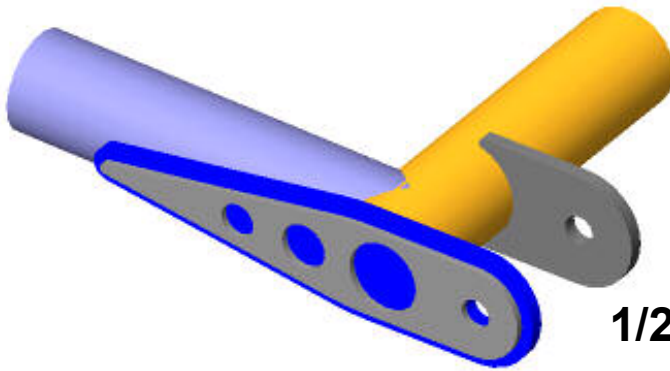
PART # 12273 \$65.00



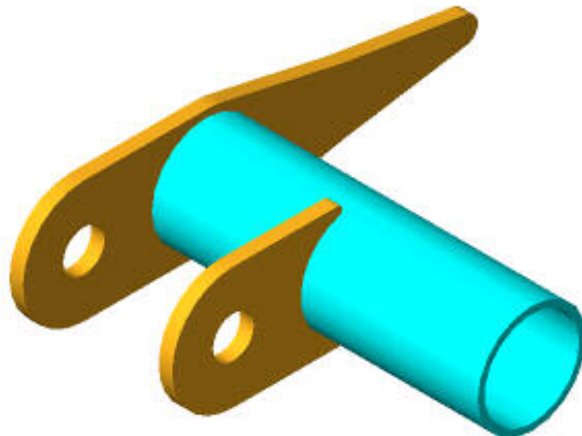


FRONT BULK HEAD KIT

ITEM NO.	QTY.	PART NO.	DESCRIPTION
1	1	12310	
2	1	12311	
3	1	12312	



**TRAILING ARM CLIPS
FOR 1 3/4" TUBE
12313 SERIES
AVAILABLE WITH
1/2" AND 5/8" BOLT HOLES**



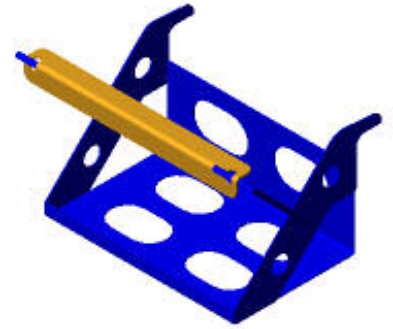
**TRAILING ARM CLIPS
FOR 2.0" TUBE
12314 SERIES
AVAILABLE WITH
1/2" AND 5/8" BOLT HOLES**



PART # 00400
DURALAST BATTERY TRAY
1 @ \$42
5 @ \$32



PART#00401
OPTIMA BATTERY TRAY
1 @ \$42
5 @ \$32



PART# 00402
STANDARD BATTERY TRAY
1 @ \$20.00
5 @ \$18.75



PART# 00405
TYPE 1 VW POWER
STEERING PUMP MOUNT

**PUMPMOUNTS
1 EA @ \$45**



PART# 00406
TYPE 4 VW POWER
STEERING PUMP MOUNT

CHEVY MOTOR MOUNTS



12107
1-9PR @ \$12.00PR



12108
1" OFFSET
1-9PR @ \$14.50 PR



12109
1.50"-3" OFFSET
1-9PR @ \$19.00PR



12110
FORD MOUNT

GENERAL MATERIAL INFORMATION

All common materials available for fabrication of your parts. Mild steel material will be standard unless specified.

MATERIALS AVAILABLE AS FOLLOWS:

- ❑ COLD ROLLED STEEL: 20 GA THRU 10 GA
- ❑ HOT ROLLED PICKLED & OILED: 14 GA THRU 1/4"
- ❑ HOT ROLLED: 5/16" THRU 5/8"
- ❑ HOT ROLLED A514 STRUCTURAL 3/8" THRU 1.00"
- ❑ 4130 CONDITION A .060 THRU 1/4"
- ❑ 4130 CONDITION N .125 THRU 1/4"
- ❑ 5052 ALUMINUM
- ❑ 6061 ALUMINUM
- ❑ 304 STAINLESS STEEL

KEEP IN MIND THAT SOME OF THESE MATERIALS DO NOT FORM WELL AND MAY REQUIRE SPECIAL WELDING TECHNIQUES.

We keep a large inventory of these materials. Others are available by order request. If you need flat sheets they are available by the square foot.

USE THE FOLLOWING CHART DETERMINE MATERIAL THICKNESS

GA	MIN THICKNESS	MAX THICKNESS	LBS. PER SQ.FT.		GA	MIN THICKNESS	MAX THICKNESS	LBS. PER SQ.FT.
1/4	.240	.255	10.21		13	.083	.0967	3.75
3/16	.172	.187	7.66		14	.067	.081	3.125
10	.126	.142	5.625		16	.054	.065	2.50
11	.111	.127	5.00		18	.042	.052	2.00
12	.096	.112	4.375		20	.032	.039	1.50

TERMS & CONDITIONS

ORDERS: MINIMUM ORDER IS \$25.00 PLUS SHIPPING AND HANDLING

TERMS: ALL ORDERS ARE TO BE PREPAID PRIOR TO SHIPMENT. WE ACCEPT VISA, MASTERCARD, DISCOVER, AND CERTIFIED CHECKS. SORRY NO C.O.D. ORDERS OR PERSONAL CHECKS ACCEPTED.

DEPOSITS: A 50% DEPOSIT IS REQUIRED ON ALL CUSTOM BUILT AND SPECIAL ORDER MERCHANDISE, ALL DEPOSITS ARE NON-REFUNDABLE.

RETURNS: NO RETURNS ACCEPTED AFTER 30 DAYS FROM THE INVOICE DATE. NO RETURNS ON CUSTOM BUILT OR SPECIAL ORDER MERCHANDISE. THERE WILL BE A 25% RESTOCKING FEE FOR ANY RETURNED GOODS.

DELIVERY: ALL MERCHANDISE WILL BE SHIPPED EITHER UPS OR TRUCKFREIGHT. WE SHIP ORDERS VIA UPS "GROUND" UNLESS OTHERWISE SPECIFIED. ADDITIONAL FEES WILL BE CHARGED ACCORDINGLY FOR THE ADDITIONAL FREIGHT CHARGE.

CLAIMS: DAMAGE CLAIMS MUST BE MADE IMMEDIATELY WITH THE CARRIER (i.e. UPS). ALTHOUGH EVERY EFFORT IS MADE TO ENSURE THAT EACH ORDER IS CORRECT & COMPLETE, YOU MUST INSPECT CONTENTS AGAINST PACKING SLIP AS SOON AS YOU RECEIVE IT. CLAIMS REGARDING CONTENT ERRORS MUST BE REPORTED WITHIN 48 HOURS OF RECEIPT OF ORDER.

WARRANTY: THESE PRODUCTS ARE INTENDED FOR RACING OR OFF-ROAD USE ONLY. THERE ARE NO WARRANTIES, EITHER EXPRESSED OR IMPLIED. NEITHER THE SELLER NOR THE MANUFACTURER WILL BE LIABLE FOR ANY LOSS, DAMAGE OR INJURY DIRECTLY OR INDIRECTLY ARISING FROM THE USE OR INABILITY TO DETERMINE THE APPROPRIATE USE OF THESE PRODUCTS. BEFORE ANY ATTEMPT AT USING THE PRODUCT, THE USER SHALL DETERMINE SUITABILITY OF THE PRODUCT(S) FOR ITS INTENDED USE AND THE USER SHALL ACCEPT & ASSUME ALL RESPONSIBILITY AND RISK.

FF



484 EZ Street, Prescott, AZ 86301 - (928) 776-4129 Fax: (928) 776-2405

www.dtpofab.com

FF